

# FARMINGTON METROPOLITAN PLANNING ORGANIZATION

## \*\* DRAFT\*\* FY2011-2016 TRANSPORTATION IMPROVEMENT PROGRAM

Aztec • Bloomfield • Farmington • San Juan County



800 Municipal Dr.  
Farmington, NM 87401  
<http://www.farmingtonmpo.org>

Draft on February 28, 2010

---

*This report was funded in part through grants from the Federal Highway Administration and the Federal Transit Administration, U.S. Department of Transportation. The contents of this report published by this agency do not necessarily state or reflect those of the U.S. Department of Transportation.*

## INTRODUCTION

The Transportation Improvement Program (TIP) is a short-term project list that includes transportation projects for all modes expected to be completed within a six year period. The current TIP for the Farmington Metropolitan Planning Organization is for FY2011-2016 and was adopted by the MPO Policy Committee on April , 2010. Projects included in the TIP must be consistent with the long-range Metropolitan Transportation Plan (MTP).

The Farmington MPO is the transportation planning forum for the cities of Aztec, Bloomfield, Farmington, and the urbanized areas of San Juan County. The TIP serves as a strategic management tool that accomplishes the objectives of the long-range plan. All projects listed in the TIP are required, by law, to be "fiscally constrained". Fiscal constraint means that projects listed in the TIP are using committed, available, or reasonably available revenue sources as well as reasonable assurance that the federally supported transportation system is being adequately operated and maintained. A financial plan is developed by the MPO in cooperation with New Mexico Department of Transportation (NMDOT), the Federal Highway Administration (FHWA), and the Federal Transit Administration (FTA).

The FMPO, in accordance with its Public Participation Plan, opened a 30-day public comment period for the FY2011-2016 TIP from February 28 to April 7, 2010.

As required by the Safe, Accountable, Flexible, and Efficient Transportation Equity Act, A Legacy for Users (SAFETEA-LU) transportation bill, the TIP includes:

- A list showing completed projects during FY2009-2010
- An agreed to list of projects for the first fiscal year of the TIP
- A financial plan
- A list of regionally significant projects sorted by lead agency, which includes projects with federal funding or those located on a facility classified as collector or above

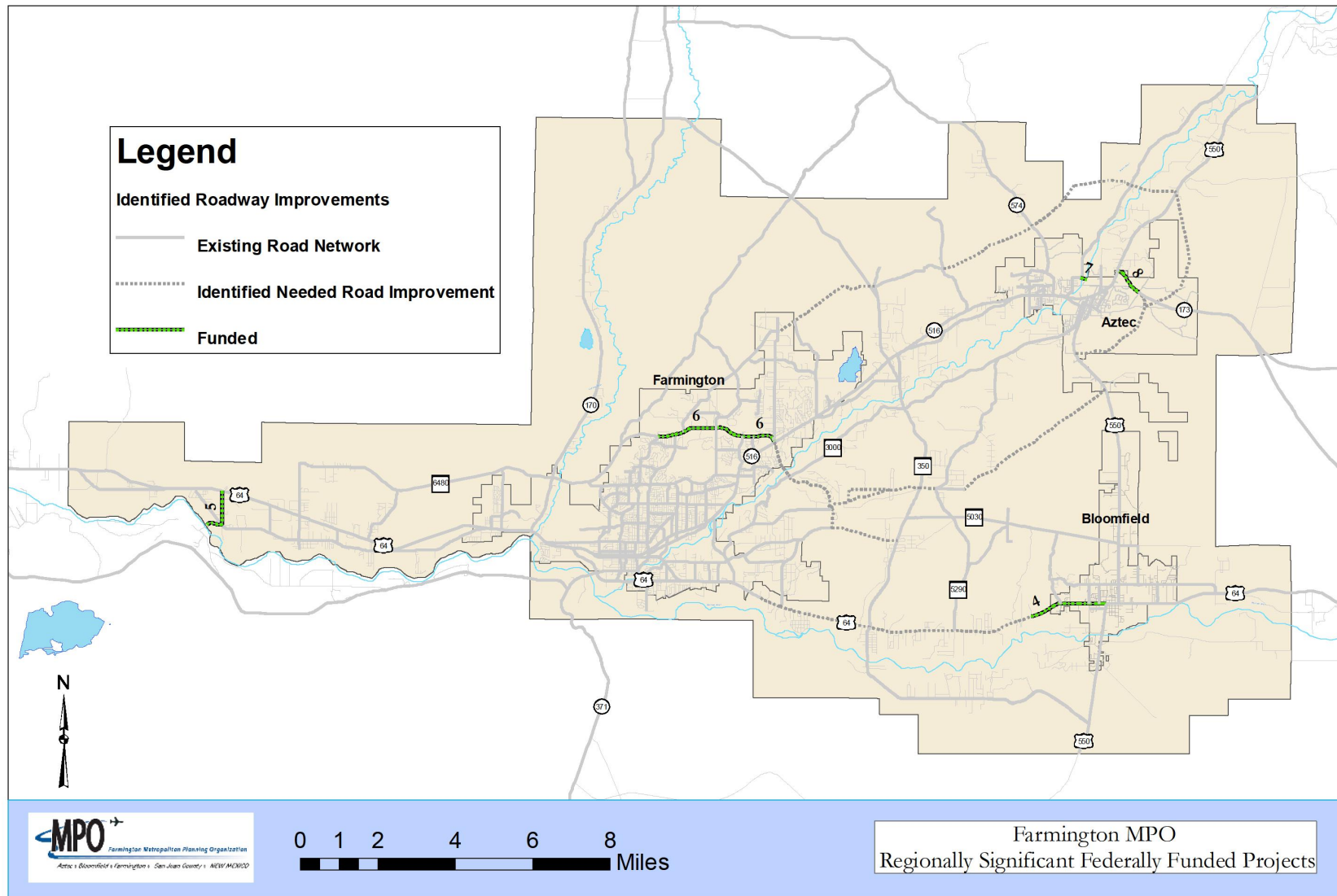
As provided for informational purposes, Appendix A includes a non-regionally significant project list and an unfunded project list. The non-regionally significant project list includes those that are not functionally classified, are local streets, or are located

outside the MPO boundary. An unfunded project list is also included to show projects that may be completed if funding becomes available.

The TIP was developed in coordination with the local entities, NMDOT, Red Apple Transit, and the general public. The TIP may be amended through the MPO committees and with opportunity for public involvement. The TIP is adopted by the MPO Policy Committee. It then becomes part of the Statewide Transportation Improvement Program (STIP).

The FY2011-2016 TIP is available to the public on the MPO website ([www.farmingtonmpo.org](http://www.farmingtonmpo.org)) and at the MPO office (100 W Broadway, 2<sup>nd</sup> Floor, Farmington, NM). Copies of the TIP are also available at the city/county hall buildings in Aztec, Bloomfield, Farmington, and San Juan County.

**MAP 1 – FY2009-2015 REGIONALLY SIGNIFICANT FEDERALLY FUNDED PROJECTS IN THE MPO**



**TABLE 1 – Descriptions of FY2010-2016  
Regionally Significant Federally Funded Projects**

<b>MAP NUMBER</b>	<b>PROJECT, DESCRIPTION &amp; TERMINI</b>	<b>LEAD AGENCY</b>	<b>FEDERAL FUNDING SOURCE &amp; FISCAL YEAR</b>	<b>TOTAL PROJECT COST</b>
1	US 64 – Widen to 6 lanes from MP 62.4 to US 550 (Phase 2)	NM Department of Transportation	Surface Transportation Program in FY2010	\$9,100,000
2	US 64 – Widen to 6 lanes from MP 62.4 to US 550 (Phase 2)	NM Department of Transportation	National Highway System & Surface Transportation Program in FY2011	\$10,710,913
3	US 64 – Wetlands Mitigation for Phase 2	NM Department of Transportation	Surface Transportation Program in FY2011	\$500,000
4	US 64 – Widen to 6 lanes from Manzano Mesa/ Salmon Ruins (Phase 3)	NM Department of Transportation	National Highway System FY2012 & FY2013	\$5,500,000 & \$2,500,000
5	CR 6675 Bridge	San Juan County	Bridge Replacement and Rehabilitation in FY2013	\$700,000
6	Sidewalks on Pinon Hills Blvd	City of Farmington	Transportation Enhancements in FY2013	\$600,000
7	North Animas Pedestrian Bridge	City of Aztec	Transportation Enhancements in FY2013	\$600,000
8	East Arterial – Construct a new road and intersection starting at NM 173	City of Aztec	American Recovery and Reinvestment Act in FY2009	\$1,700,000

**TABLE 2 – List of Regionally Significant Projects  
Completed in FY2009 & FY2010**

<b>PROJECT NAME</b>	<b>TERMINI</b>	<b>PROJECT DESCRIPTION</b>	<b>LEAD AGENCY</b>	<b>FUNDING SOURCE</b>	<b>TOTAL COST</b>	<b>FISCAL YEAR</b>
East Arterial	US 550 to NM 173	Design, engineering, environmental assessment and construction	City of Aztec	Transportation, Community, System Preservation	\$288,990	FY2010

PROJECT NAME	TERMINI	PROJECT DESCRIPTION	LEAD AGENCY	FUNDING SOURCE	TOTAL COST	FISCAL YEAR
				(TCSP)		
East Arterial	US 550 to NM 173	Design, engineering, environmental assessment and construction	City of Aztec	Federal Earmark	\$588,000	FY2010
Animas River Pedestrian Bridge	Hartman Park to Riverside Park	Construct new pedestrian bridge over the Animas River in Aztec	City of Aztec	Transportation Enhancements	\$760,000	FY2009
West Maple Ave	US 550 to South Church to	Reconstruction, including curb, gutter, and sidewalks	City of Bloomfield	American Recovery and Reinvestment Act	\$900,000	FY2010
S Church St. (Phase 1)	US 64 to Maple	Reconstruction, including paving, road base, curb/gutter, sidewalks	City of Bloomfield	Federal (CDBG) & Local	\$350,000	FY2009
West Main (US 64)/Apache St Intersection	Intersection	Rebuild and replace the traffic signal	City of Farmington	Highway Safety Program	\$300,000	FY2010
North Foothills Circulation	Hood Mesa Trail from Foothills to College, College north of Sandalwood to Hood Mesa Trail and Lakewood from Foothills to Hood Mesa Trail	Construct portions of Hood Mesa Trail, Lakewood and College Blvd.	City of Farmington	Local		FY2010
Wildflower Pkwy	Browning Pkwy to Wildflower Mesa Dr.	Widen road and install curb/gutter, bike lanes, and sidewalks from	City of Farmington	American Recovery and Reinvestment Act	\$1,000,000	FY2010
W Pinon Hills Blvd	Bridge over LaPlata River	Reconstruct bridge and culverts	City of Farmington	Local	\$600,000	FY2009
CR 3900	CR 3000 to CR 3950	Preliminary Engineering, ROW, and construction	San Juan County	Federal Earmark	\$588,000	FY2010
Bridge #8116 and Bridge #8105	CR 2900 and CR 7150	Design and/or construction	San Juan County	Federal Earmark	\$490,000	FY2010

<b>PROJECT NAME</b>	<b>TERMINI</b>	<b>PROJECT DESCRIPTION</b>	<b>LEAD AGENCY</b>	<b>FUNDING SOURCE</b>	<b>TOTAL COST</b>	<b>FISCAL YEAR</b>
CR 350/CR 3720 Intersection	Intersection	Geometric improvements and signalization	San Juan County	Highway Safety Program	\$1,740,000	FY2010
NM 516/Lt. Plant Road	Intersection and north to Lydia Rippy Rd	Geometric design, ROW acquisition, sight distance improvements, and sidewalks	NMDOT	Highway Safety Program	\$1,500,000	FY2010

**FMPO AGREED TO PROJECT LIST**

As stated in 23 CFR 450.330, in the adopted TIP the first year of the TIP shall constitute an ‘agreed to’ list of projects for project selection. This list for the MPO will be based on federally-funded projects in FY2011.

**TABLE 3 – FARMINGTON MPO AGREED TO PROJECT LIST in FY2011**

<b>PROJECT NAME</b>	<b>TERMINI</b>	<b>PROJECT DESCRIPTION</b>	<b>LEAD AGENCY</b>	<b>FUNDING SOURCE</b>	<b>TOTAL COST</b>
US 64 Farmington to Bloomfield (Phase 2)	MP 62.4 to US 550	Widen to 6 Lanes	NMDOT	NHS	\$9,100,000
Red Apple Transit Operating	N/A	Operating costs for the Red Apple Transit system	City of Farmington	FTA 5307	\$1,118,000

**FINANCIAL PLAN for the**  
**FY2011-2016 TRANSPORTATION IMPROVEMENT PROGRAM**

The Farmington MPO receives funding from various federal and local sources. These sources are channeled to the MPO through District 5 of the New Mexico Department of Transportation. The primary federal funding sources allocated to the FMPO are National Highway System (NHS), Surface Transportation Program - Under 200,000 (TPO), and Transportation Enhancements (TPE). The TPE funding is competitive on a district basis. .

Table 4 describes federal funding made available to NMDOT District 5 and programmed to the MPO in FY2010 and FY2011 to coincide with the Statewide Transportation Improvement Program (STIP).

**TABLE 4 – FHWA Funding Sources & Amounts Programmed to NMDOT District 5 and to the Farmington MPO for FY2010-2011**

<b>FUND SOURCE</b>	<b>FISCAL YR</b>	<b>DISTRICT 5</b>	<b>PROGRAMMED TO FMPO</b>
National Hwy System	FY2010	\$1,547,001	\$0
	FY2011	\$7,997,134	\$7,997,134
Surface Transportation Program	FY2010	\$14,700,000	\$9,100,000
	FY2011	\$5,432,779	\$3,213,779
Highway Safety Improvement Program	FY2010	\$5,090,000	\$3,540,000

Note: Programmed amounts to the FMPO include required match

The City of Farmington operates the Red Apple Transit system that provides public transit services to Farmington, Aztec, Bloomfield, and Kirtland. The system includes three local routes (two loop routes and one express route) within Farmington and three regional routes from Farmington to the outlying cities. Red Apple Transit receives operating funding (5307) and capital funding (5309) from the Federal Transit Administration. The following tables describe FTA 5307 funding provided to the state of New Mexico through SAFETEA-LU and how much is programmed to Red Apple Transit for operating expenses. 5307 funding is a 50-50 match, meaning the FTA and the required local match are the same amounts. Funding is allocated based on population and population density. Please note that SAFETEA-LU only provides funding through FY2009 for the states. For future years, reasonable estimates are based on average percentage increases from FY2007 to FY2009.

**Table 5 – Past FTA 5307 Funding Amounts for Statewide Urban Areas and Red Apple Transit**

	STATEWIDE URBAN FUNDING*	RED APPLE TRANSIT		
		FTA (50%)	Local (50%)	Total
FY2008	\$ 11,070,253	\$ 559,000	\$ 559,000	\$ 1,118,000
FY2009	\$ 12,402,378	\$ 559,000	\$ 559,000	\$ 1,118,000
FY2010	\$ 12,790,183	\$ 559,000	\$ 559,000	\$ 1,118,000

\* Statewide Urban Funding is for Urbanized Areas with populations greater than 50,000 (Albuquerque, Farmington, Santa Fe, Las Cruces)

**TABLE 6 – FTA 5307 Anticipated Funding Amounts for Statewide Urban Areas  
and Red Apple Transit for FY2011-2014**

FUNDING SOURCE	STATEWIDE URBAN FUNDING*				RED APPLE TRANSIT**			
	2011	2012	2013	2014	2011	2012	2013	2014
FTA 5307 (Operating)	\$ 13,342,478	\$ 14,353,838	\$ 15,441,859	\$ 16,612,352	\$ 595,177	\$ 595,177	\$ 595,177	\$ 595,177
<b>FY TOTALS</b>	<b>\$ 13,342,478</b>	<b>\$ 14,353,838</b>	<b>\$ 15,441,859</b>	<b>\$ 16,612,352</b>	<b>\$ 595,177</b>	<b>\$ 595,177</b>	<b>\$ 595,177</b>	<b>\$ 595,177</b>

Statewide Urban Grand Total:                   \$ 59,750,527

Red Apple Federal Total:           \$ 2,380,708

\* Statewide Urban Funding is for Urbanized Areas with populations greater than 50,000 (Albuquerque, Farmington, Santa Fe, Las Cruces)

\*\* Total 5307 funding for Red Apple for each FY is double these amounts since there is a 50-50 federal & local split (\$1,190,354 per year; grand total is \$4,761,416)

**Public Comments on the  
FY2011-2016 Transportation Improvement Program**