

MPO NEWSLETTER

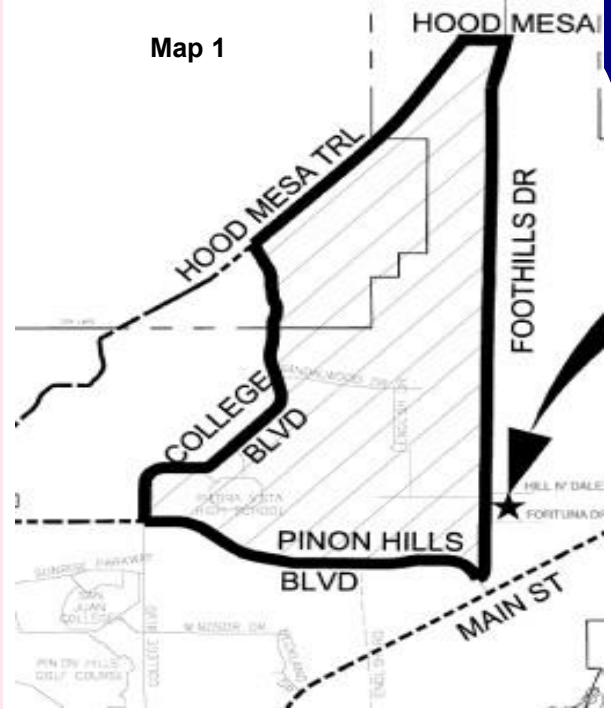
FY2007—2nd Quarter
October—December 2006

NORTHEAST FARMINGTON CIRCULATION STUDY

The northeast area of Farmington is one of the fastest growing areas of the city. Due to increasing traffic congestion and safety concerns, the city of Farmington has been working with residents in this area to develop alternatives that may provide solutions to these problems. The study area is bounded by Foothills on the east, Piñon Hills Blvd on the south, and Hood Mesa Trail to the west and north (see Map 1).

The city asked the MPO to conduct several traffic model runs with various new road connections to determine which roads might be the most effective in dispersing area traffic. Scenarios included individual extensions of various north-south and east-west roads in the area as well as combinations of the individual alternatives.

The model results were summarized and presented to the general public during a public meeting on January 8, 2007. Although many issues remain, the public agreed an eastern entrance needs to be created for the area's high school and new roads need to be built in the northern part of the study area where new residential housing is being built. City staff will be reviewing comments made at this meeting in order to develop proposals to bring forward to city council.



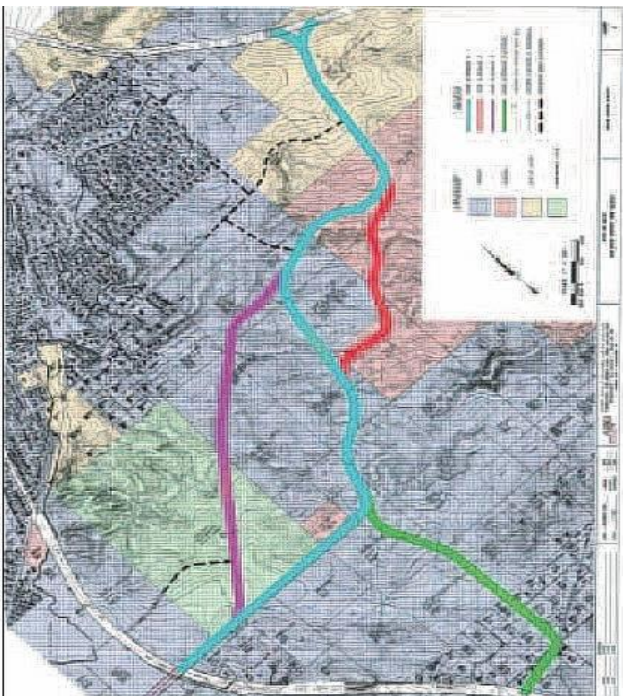
PROPOSED ALIGNMENTS FOR THE AZTEC EAST ARTERIAL ROUTE

As a way to direct heavy truck traffic away from its historic Main Avenue and to create new economic development opportunities, the city of Aztec has begun working with a local consultant firm to determine the most effective alignment for the proposed east arterial route. The route would connect with US 550 south of Aztec and run north and west to NM 173. NM 173 would also be improved from the east arterial back to US 550 north of Aztec (see Map 2).

On December 7, 2006 a public meeting was held to present the three alignments to the general public, to solicit comments, and to complete an evaluation criteria form for the alignments. During the well-attended meeting, many were in support of this route while others expressed concerns about noise and funding issues and impacts to downtown businesses. The rankings gathered from the evaluation forms and the comments received at the meeting will assist the city as it continues the preliminary engineering phase of this alignment study.

The east arterial route is Aztec's top priority for the GRIP2 funding program. The city is asking for \$7.95 million (includes the state contribution and local match) from GRIP2. City officials have indicated both US Senators Bingaman and Domenici are each seeking \$1 million in federal earmarks for this project.

Map 2



..... **FROM THE MPO NEWSROOM**

From October-December, the Farmington MPO has worked on the following activities:

MPO Associate Planner – Robert Messenger started work as the MPO Associate Planner on November 9, 2006.

Traffic Count Program – The annual MPO traffic counts were taken the week of October 15 and the week of November 5.

Intelligent Transportation Systems Architecture – The ITS architecture for the MPO was adopted by the Policy Committee on November 9. ITS is a system of integrated technologies that improve safety and mobility on roadways, provide for integrated emergency management procedures, and provide regional traveler information.

MTP Policy Implementation – The long range Metropolitan Transportation Plan calls for the implementation of a number of regional policies for all modes of transportation in the MPO. On November 9, the Policy Committee approved a prioritized list of three MTP policies for staff and its entities to begin developing. These policies will be worked on throughout the first half of 2007.

1. Roadway Access Standards for roads classified collector and above
2. A Bicycle/Pedestrian Plan for the MPO
3. Line Route Analysis Study for the Red Apple Transit System

Public Participation Plan – The MPO worked through November and December on the update to the Public Participation Plan (PPP). This document indicates how the MPO communicates with the public and how it distributes information to the public. The plan also encourages active participation by the public for identifying and commenting on transportation issues, programs and projects. The update to the plan is expected to be adopted by the Policy Committee in January.

FY2008-2013 Transportation Improvement Program (TIP) Call for Projects – To begin the TIP update process, the MPO issued a Call for Projects to the entities, Red Apple Transit, and NMDOT.

Meet the MPO Associate Planner:

Robert Messenger

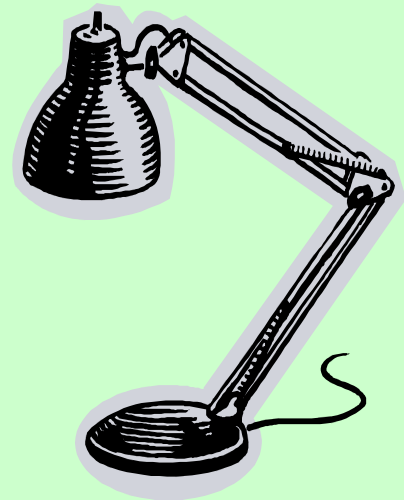
Robert Messenger started working for the Farmington MPO in November, 2006. He graduated from the University of New Mexico with a Masters of Community and Regional Planning degree in May, 2003.

During graduate school he worked for the Alliance for Transportation Research Institute (ATRI), which is under the direction of the University of New Mexico, New Mexico State University, and Sandia National Laboratories. While employed at ATRI, Robert conducted research on Intelligent Transportation Systems (ITS) applications for truck traffic at state and international border crossings, as well as a feasibility study for expanded transit services in the Taos-Angel Fire “Enchanted Circle” region of Northern New Mexico.

He also worked for the Family and Community Services Department of the City of Albuquerque, where he worked on neighborhood-scaled transportation improvements and affordable housing projects.

Robert is originally from Kentucky, where he worked as a mechanical engineer. But, he had always wanted to live in the west, because he fell in love with the Rocky Mountains when he was 16, while on a family trip to Colorado. He finally answered the call to “Go west, young man”, and moved to Albuquerque, New Mexico in 1995.

Robert enjoys outdoor activities such as biking, camping, and hiking, as well as team sports like volleyball, and Ultimate Frisbee.



2007 Regular Meeting Schedule

POLICY COMMITTEE

5:00 p.m.

2nd Thursday of the month (except as noted)

Date	Location	
January 11, 2007 Rescheduled to January 18, 2007	Executive Conference Room Farmington Municipal Building 800 Municipal Drive	Farmington, New Mexico
March 8, 2007	City Council Chambers Bloomfield City Hall 915 N. First St.	Bloomfield, New Mexico
April 12, 2007	Commission Chambers San Juan County Administrative Building 100 S. Oliver	Aztec, New Mexico
June 14, 2007	Executive Conference Room Farmington Municipal Building 800 Municipal Drive	Farmington, New Mexico
September 13, 2007	City Council Chambers Bloomfield City Hall 915 N. First St.	Bloomfield, New Mexico
November 8, 2007	Commission Room Aztec City Hall 201 W. Chaco St.	Aztec, New Mexico

TECHNICAL COMMITTEE

10:00 a.m.

4th Thursday of the month (except as noted)

Executive Conference Room

Farmington Municipal Building, 800 Municipal Drive
Farmington, New Mexico

Date
January 25, 2007
February 22, 2007
March 22, 2007
April 26, 2007
May 24, 2007
June 28, 2007
July 26, 2007
August 23, 2007
September 27, 2007
October 25, 2007
November 15, 2007* (3 rd Thursday)
December 13, 2007* (2 nd Thursday)

Do you want to be notified of MPO meetings? Would you like to receive a copy of the newsletter? To add your name to our mailing list, just send us an e-mail, write us a letter, stop by our office, send us a fax, fill in the form on the website or give us a call. We'll need to know your name, an address to send the information (either electronically or via mail), and whether you want meeting notification, the newsletter, or both. Here's how to reach us:

Mail:
800 Municipal Drive
Farmington, NM 87401
E-mail: vturney@fmtn.org
Web Page: www.FarmingtonMPO.org

Phone: (505) 599-1466
Fax: (505) 599-1299
Office:
100 W. Broadway
Farmington, New Mexico 87401

Staff:
Charity Fechter: MPO Officer
Joe Delmagori: MPO Planner
Robert Messenger: MPO Associate Planner
Virginia Turney: Administrative Aide



800 Municipal Drive
Farmington, NM 87401