



Farmington Metropolitan Planning Organization

Aztec • Bloomfield • Farmington • San Juan County • NEW MEXICO

1ST QUARTER - JULY 2010 - SEPTEMBER 2010

SPECIAL POINTS OF INTEREST:

- ★ Safe Routes to School Program



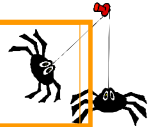
INSIDE THIS ISSUE:

Red Apple 2
Transit Study

Committee Meeting Schedule — 4
November & December



SAFE ROUTES TO SCHOOL



FARMINGTON SAFE ROUTES TO SCHOOL

Every October, thousands of children across the globe walk to school to celebrate International Walk to School Day. Over the past two years students from Farmington schools have participated in the international event. This year, students from Apache, Ladera, Mesa Verde and McKinley participated in the event.

Twice a year, the Farmington Walk and Roll Program, with the assistance from the Farmington MPO, takes student arrival counts. These numbers are used to evaluate progress within each school and within the program as a whole.

By helping to encourage students to walk or bike to school and by making infrastructure improvements, the program is looking to reverse a national trend in the number of students biking and walking to school. Nationally the percent of students that live within two miles of their school and walk or bike is 14%. This trend is being reversed here in Farmington as has been experienced by McKinley Elementary. The school tries to encourage more walking and works to educate drivers about sharing the road with bikes. In April 2009, 14% of students walked and biked to McKinley. Now in September 2010, those numbers have increased substantially to 29%.

BLOOMFIELD SAFE ROUTES TO SCHOOL

Central Primary School in Bloomfield has joined in the efforts to start a Safe Routes to School program. After a public meeting in June to introduce the idea of a SRTS program, school staff issued parent surveys to better understand travel conditions and to learn about immediate safety concerns. During the week of September 6, staff from the MPO and Central Primary took student arrival counts. The counts show that 55% take the bus, 40% arrive by vehicle, and 5% walk/bike. Central Primary will work on developing low cost SRTS activities during the year. They will also strive to bring together a SRTS team which will include parent volunteers and teachers to help coordinate the program.



RECOMMENDED IMPROVEMENTS FOR RED APPLE TRANSIT

The Farmington Metropolitan Planning Organization and the City of Farmington are working with LSC Consulting to perform a comprehensive transit study of Red Apple Transit. The purpose of the study is to evaluate the existing system and to determine potential expansion routes to serve the existing and future transit needs of the MPO region. Recommendations will be developed on where and when to expand the system based on existing conditions and future population and employment growth. The study will also include estimating costs and projecting ridership associated with expansion and possible locations of transit hubs.

After population/employment growth was estimated and a greatest transit needs index was developed in early summer, LSC analyzed a series of service concept options that could apply to the existing system. Concept ideas were created for the Farmington routes as well as the regional routes to Aztec, Bloomfield, and Kirtland.

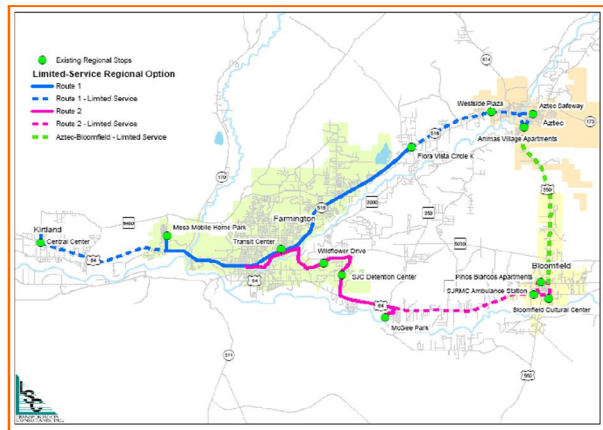
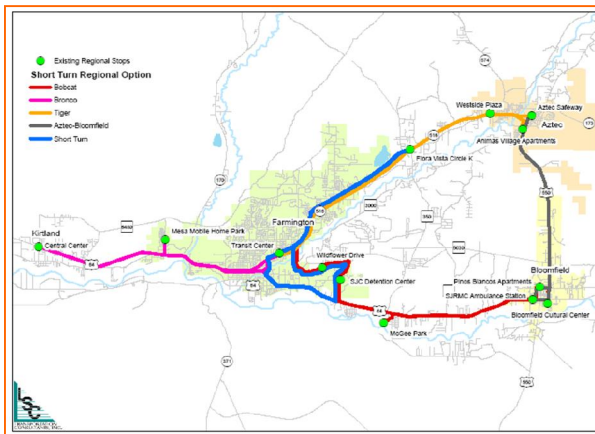
Regional routes would add all-day service to a portion of the existing routes, keeping peak hour service to the outlying cities and adding a new route from Aztec to Bloomfield. The Farmington options would restructure the existing loop routes.

Several stakeholder meetings and one public meeting were held October 5-7 to discuss these alternatives. Participants gave favorable review to Options #2 and #5. After a few more stakeholder reviews in October, LSC will issue a preliminary report that evaluates these alternatives in more detail. Estimated costs, projected ridership, and an implementation plan will all be part of the preliminary report.



Option #1 - all day service from Flora Vista to southeast Farmington

Option #2 - all day service from Flora Vista to west Farmington and from McGee Park to the Four Corners Airport.

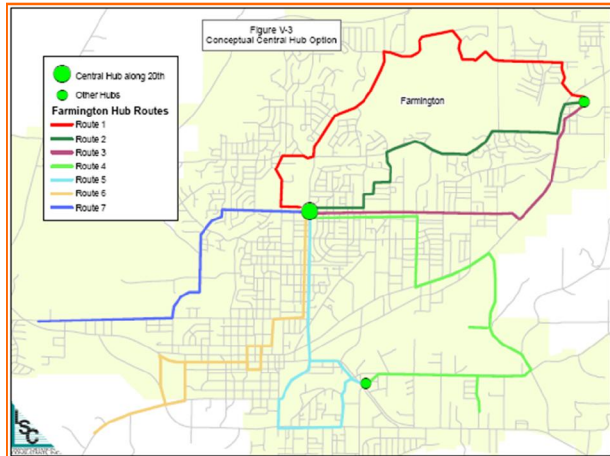


HAPPY HALLOWEEN

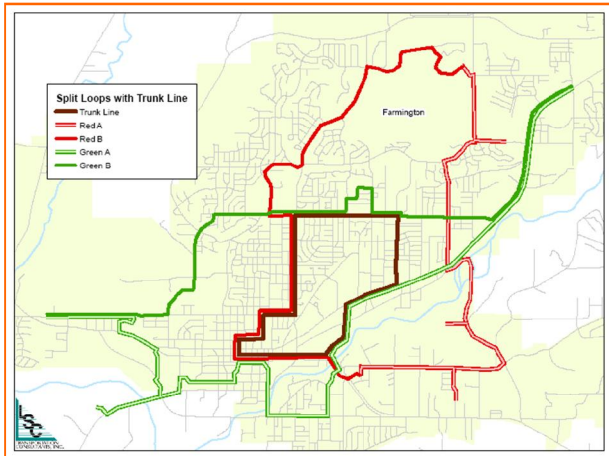


FARMINGTON OPTIONS

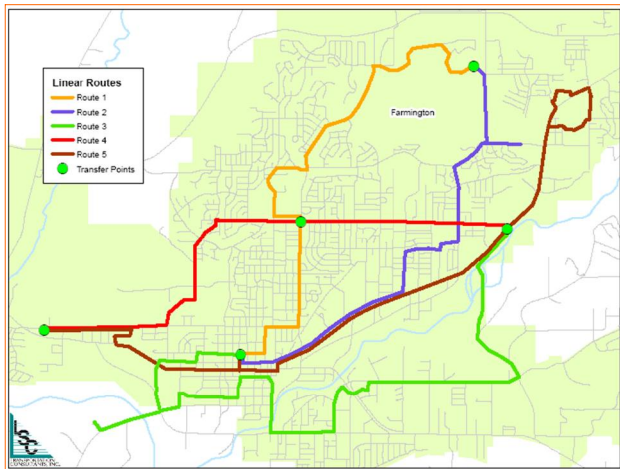
Option #3 - create a central hub near the center of the city (along 20th Street)



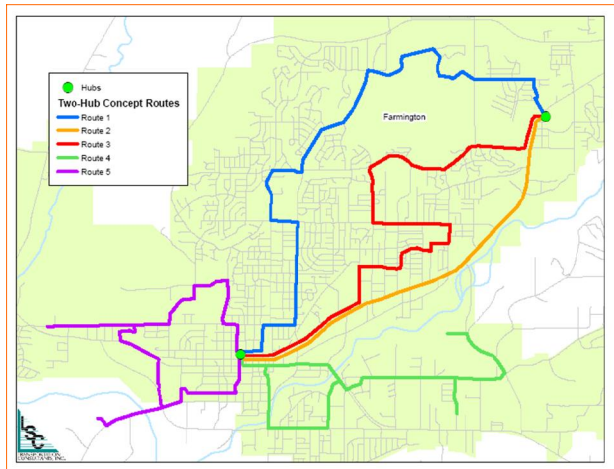
Option #4 - split the existing routes into four half loops with a circular route



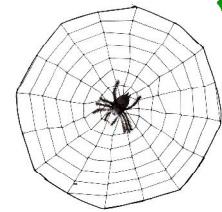
Option #5 - a linear system where routes would run more directly from east-west and north-south



Option #6 - create a two hub system



View the transit options on the MPO website at:
www.farmingtonmpo.org/transit.html



1ST QUARTER - JULY 2010 - SEPTEMBER 2010



TECHNICAL COMMITTEE

10:00 a.m.

POLICY COMMITTEE

3:00 p.m.



November 18, 2010	Aztec City Hall Commission Chambers 201 W. Chaco St, Aztec NM	November 11, 2010	City of Aztec Commission Chambers 201 W. Chaco Aztec, NM
December 9, 2010	Bloomfield City Hall City Council Chambers 915 N. First St., Bloomfield, NM		
January 2011	To Be Determined.		



Do you want to be notified of MPO meetings? Would you like to receive a copy of the newsletter? To add your name to our mailing list, just send us an e-mail, write us a letter, stop by our office, send us a fax, fill in the form on the website or give us a call. We'll need to know your name, an address to send the information (either electronically or via mail), and whether you want meeting notification, the newsletter, or both. Here's how to reach us:

<p>MAILING INFORMATION</p> <p>800 Municipal Drive Farmington, NM 87401 E-mail: kbonnell@fmtn.org</p> <p>Web Page: www.FarmingtonMPO.org</p>	<p>CONTACT INFORMATION</p> <p>Phone: (505) 599-1466 Fax: (505) 599-1299</p> <p>Office: 100 W. Broadway Farmington, NM 87401</p>	<p>FARMINGTON STAFF</p> <p>Bob Campbell: MPO Officer</p> <p>Joe Delmagori: MPO Planner</p> <p>Martin Lucero: MPO Associate Planner</p> <p>Kathy Bonnell: MPO Admin Aide</p>
--------------------------------------------------------------------------------------------------------------------------------------------------------------------------------------------------------------------------------------------------------------------	---------------------------------------------------------------------------------------------------------------------------------------------------------------------	----------------------------------------------------------------------------------------------------------------------------------------------------------------------------------------------------

